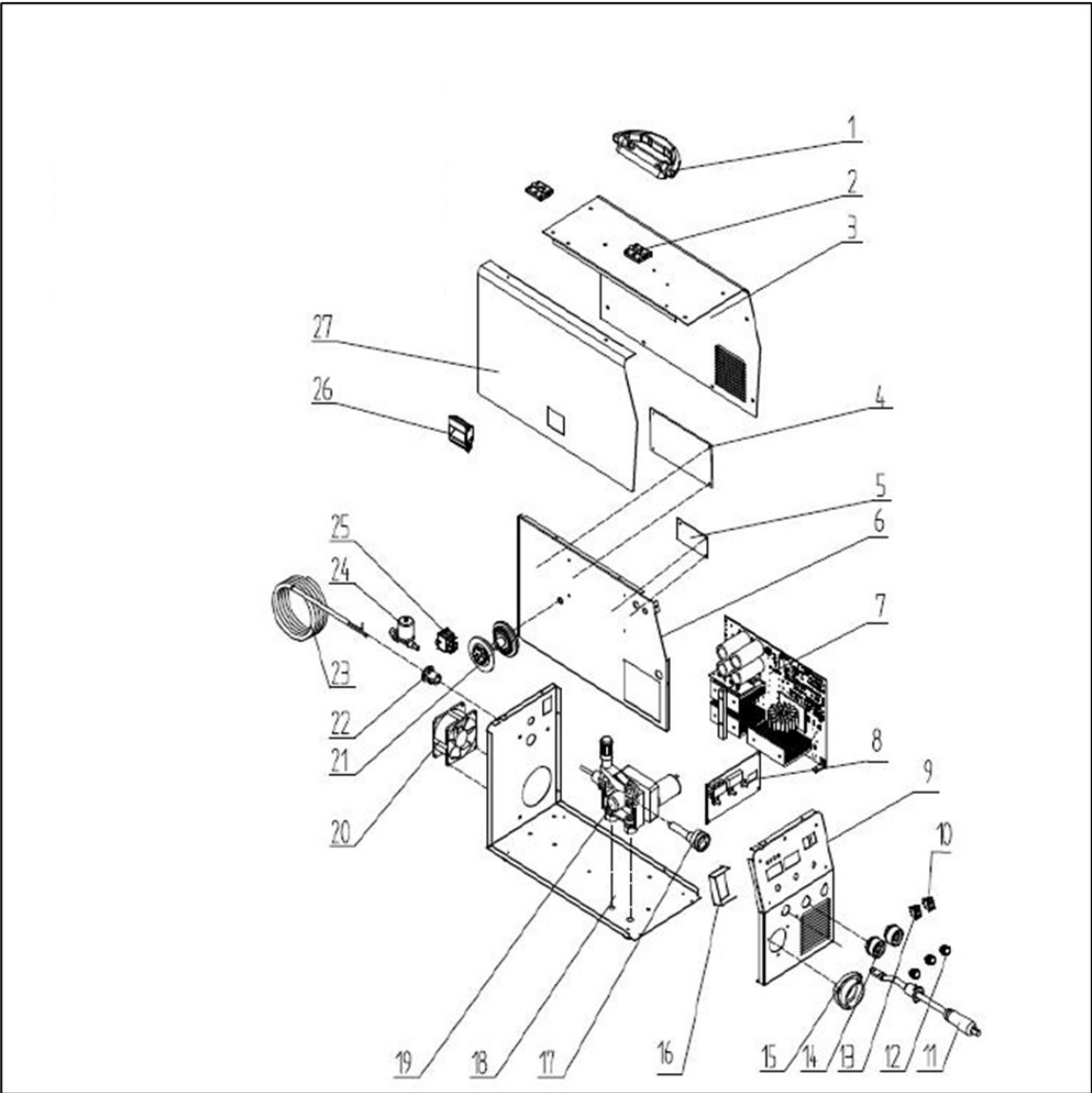


TD007
Issue V2
Date 28/02/2022



05723 05724 SIP AUTOPLUS ECO 180 & 200
Exploded Diagram & Parts List

TD007

Issue V2

Date 28/02/2022

<i>Item No.</i>	<i>Description</i>	<i>SIP Code</i>	<i>Item No.</i>	<i>Description</i>	<i>SIP Code</i>
1	05723 05724 Handle	WE02-00901	14	05723 05724 Dinse Socket - Large	WE02-00914
2	05723 05724 Hinge	WE02-00902	15	05723 05724 Euro Surround	WE02-00915
3	05723 05724 Case	WE02-00903	16	05723 05724 Enclosure	WE02-00916
4	05723 05724 Control board	WE02-00904	17	05723 05724 Euro-Connector	WE02-00917
5	05723 05724 EMC board	WE02-00905	18	05723 05724 Rear & Base Plate	WE02-00918
6	05723 05724 Centre Panel	WE02-00906	19	05723 05724 Wire feed & Motor Assy	WE02-00919
7	05723 05724 Inverter Module	WE02-00907	20	05723 05724 Cooling Fan	WE02-00920
8	05723 Front Panel Control Board	WE02-00908	21	05723 05724 Spool Holder	WE02-00921
8	05724 Front Panel Control Board	WE02-00928	22	05723 05724 Cable Gland	WE02-00922
9	05723 05724 Front Panel	WE02-00909	23	05723 05724 Mains Lead	WE02-00923
10	05723 05724 2T/4T Switch	WE02-00910	24	05723 05724 Gas Solenoid Valve	WE02-00924
11	05723 05724 Polarity Cable	WE02-00911	25	05723 05724 On / Off Switch	WE02-00925
12	05723 05724 Potentiometer Knob	WE02-00912	26	05723 05724 Door Catch	WE02-00926
13	05723 05724 Welding Mode Switch	WE02-00913	27	05723 05724 Wire & Motor Access Door	WE02-00927